

MB200 MFP Series

OKI[®]
PRINTING SOLUTIONS



**Professional mono MFP solutions for
the home office or small workgroup**

MB260 MFP
MB280 MFP
MB290 MFP





With the MB200 MFP Series, you can print, copy and scan, with available analog fax and network connectivity.

MB200 MFP Series Highlights:

- Professional, affordable solutions—versatile, reliable and simple to operate
- Print, copy, scan, with available SuperG3 fax¹
- Compact design, ideal for home office or small workgroup
- Scan to/Print from USB Flash drive via convenient front port
- Full QWERTY keyboard for easy entry of file names and e-mail addresses²
- Convenient mono printing and copying at up to 22 ppm³
- Digital copying with zoom and multi-copy features
- 50-sheet automatic document feeder (ADF)¹
- Available with internal Ethernet connectivity⁴
- Wireless LAN option for added convenience and improved efficiency
- 1-Year limited warranty with Overnight Exchange⁵
- Live, toll-free technical support 24/7/365⁵

Quality and versatility don't have to be expensive – The MB200 MFP Series from OKI Printing Solutions combines mono printing and copying, color/mono scanning, analog faxing¹, and scan-to capabilities. These affordable compact MFPs let you access advanced features normally reserved for more costly equipment.

With the MB200 MFP Series' simple, user-friendly operation and clear, sharp print and copy output, you can produce professional-looking documents with ease.

Scan to and print from a USB Flash drive – Have a document you need to scan quickly and transport as a digital file? Simply insert a USB memory stick into the USB port conveniently located on the front of all MB200 MFP Series models, and place your document on the flatbed platen or in the 50-sheet automatic document feeder (ADF)¹. Scan it as a black & white or color PDF, save it to the memory stick, and you're on your way in seconds.

The MB290 MFP also lets you print select file formats directly from the USB Flash drive, without the need for a PC.

Document management made easy – Among the utilities that come standard with all three models in the MB200 MFP Series is PaperPort[®] by Nuance[®]. This industry-leading, award-winning software will enable you to easily organize your scanned files, further enhancing your productivity.

With its intuitive, thumbnail-based interface, PaperPort lets you take any scanned document, save it in a PDF format, and quickly make it available for archiving or sharing.

Connect to the network or go wireless – Sharing the functions of your MFP is a key to increased productivity. The MB290 model is network-ready out of the box. And an optional interface for all three models enables your workgroup to print, scan or PC-fax wirelessly from anywhere in the office.

The MB200 MFP Series does all you want and more. In addition, these MFPs are designed to make changing their one-piece, cost-efficient cartridge—including a high-capacity 5,500-page⁶ version—quick, clean and easy. Your investment just keeps looking better and better.

The MB200 MFP Series from OKI Printing Solutions. Convenience, cost efficiency and choice—all in one.

¹ MB280 and MB290 models only.

² Network e-mail standard on MB290 model only.

³ Published performance results based on laboratory testing. Individual results may vary.

⁴ MB290 model only.

⁵ Available in the U.S. and Canada only.

⁶ Estimated life, based on ISO 19752. Units ship with 2,000-page "starter" toner cartridge.

Features that let you take control of your office security, your bottom line, even the way you manage hardcopy documents.

Control the way your MFP is used –

The MB200 MFP Series allows an administrator to grant or restrict scanning and/or copying access to individuals or groups of users.

Simply assign individual PIN identification codes to your personnel, according to their privileges. They can unlock the restricted functions—with your permission—by entering their PIN codes into the machine's control panel.

Improve your bottom line – The MB200 MFP Series delivers cost-effective operation as well as an exceptional return on your investment.

Its outstanding reliability and long-lasting consumables help you control operating costs and improve productivity:

- Support one device rather than several
- Stock fewer replacement supplies
- Reduce user interventions

Scan to and print from a USB Flash drive via the convenient front port. Pop it in, complete the process, pop it out—and you're on your way.

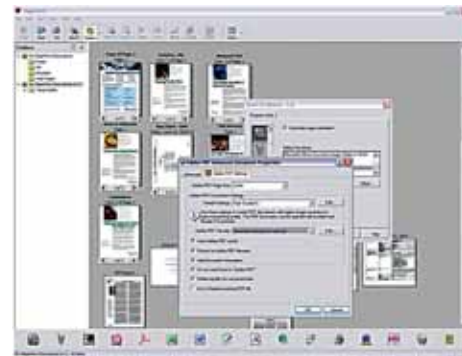


PIN access gives you control over the way your workgroup uses the MFP, with access to the keyboard, copying and e-mail granted or restricted at your discretion:



Low operating cost is another advantage of the MB200 MFP Series, made possible by long-lasting, one-piece OKI® consumables.

Document management made simple – The MB200 MFP Series comes with software that lets you easily turn piles of paper and photos into PDF and JPEG files—using the MFP's scanner—and save them to your computer for future use.



PaperPort® is an award-winning scanning and document management application that turns paper into digital content.

Feel like a customer again – OKI Printing Solutions understands the needs of today's businesses. We listen to our end users and provide the solutions that can increase their performance while improving their bottom line.

Your total satisfaction with our products and support is the driving force behind all we do.

MB200 MFP Series at a Glance:

Single-sheet flatbed scanner input

Easy-to-use operator panel: Print/Copy/Scan



MB260 MFP

50-sheet ADF and single-sheet flatbed scanner input

Easy-to-use operator panel: Print/Copy/Scan/Fax (includes full QWERTY keyboard)



MB280/290 MFP

Up to 22 ppm mono print and copy speeds²

10,000 pages-per-month average duty cycle

High capacity 5,500-page toner cartridges available

Additional front USB port for scan-to functionality

Manual feeder tray for printing on paper weights up to 162 gsm

250-sheet internal paper tray

¹ QWERTY keyboard on MB280 and MB290 models only.

² Published performance results based on laboratory testing. Individual results may vary.

MB200 MFP Series

Specifications		
Printer	Print Speed	Up to 22 ppm ¹
	Time to First Page	As fast as 13 seconds ²
	Warm-Up Time	As fast as 21 seconds
	Print Resolution	600 x 600 dpi
	Processor Speed	100 MHz
	Duty Cycle	10,000 pages/month
	Emulations	MB260/280 – Enhanced Windows® Printing (GDI) MB290 – PCL® 6; PostScript® 3 ³ ; PDF v1.4; GDI
	Operating Systems	Windows Vista® (32/64), XP (32-bit), Server 2003 (32-bit), 2000/Server; Mac® OS 10.3 or higher; Linux
	Connectivity	USB 2.0 – Host front port (rear port MB280 only); 10/100 Base-T internal Ethernet print server (MB290 only); optional 802.11b/g wireless LAN
	USB Host	Print direct from USB drive via front port; supports TIFF, JPEG and TXT formats (PDF – MB290 only)
Copier	Copy Speed	Up to 22 cpm ¹
	Time to First Copy	As fast as 13 seconds ²
	Copy Resolution	600 x 600 dpi
	Copy Scaling	25% to 400%
	Copy Quantity Selection	1–99
	Duplex Copying	Manual
Scanner	Scan Type	Color, Mono and Gray Scale
	Document Input	Flatbed scanner (all models); MB280/290 only – 50-sheet Automatic Document Feeder (ADF)
	Scan Speed	As fast as 3.9 sec./pg. from flatbed; 2.6 sec./pg. from ADF
	Scan Resolution	Up to 600 x 600 dpi
	Scan-to	PC – create electronic files from hard-copy originals with Nuance® PaperPort® SE 11 and scan to Folder, USB drive (PDF, JPEG, TIFF), E-mail (MB290), Network folder (SMB – MB290), and FTP sites (MB290)
	Color Scan Depth	36-bit color
	Gray Scale	256 level
	Contrast Adjustment	7 levels
Utilities	Document Management	Nuance PaperPort SE 11 standard
	Companion Suite Pro	Enables access to MFP features and settings
Address Book	E-Mail and Fax	Stores 250 addresses; user-defined format, enabled by full QWERTY keyboard (MB280/290 only)
Fax (MB280/290 only)	Fax Modem	33.6 Kbps SuperG3; 2.5 sec./pg. transmission ²
	Connectivity	Analog fax/phone ports
	LAN Fax	Yes
	Fax to USB Flash Drive	TIFF format
	Broadcast Dials	Up to 250 locations using pre-programmed numbers
	Fax Memory	MB290 – 8 MB (500 pages); MB280 – 2 MB (125 pages) ²
	Functions	Delayed sending; Broadcast; Polling; Fax forwarding; Auto Tel/Fax; Confidential mailbox
	Fax Server	T.37 (seamless integration with Sagem-Interstar XMediusFAX® server software)
Memory	System Memory	MB290 – 64 MB RAM; MB260/280 – 32 MB RAM
Paper Handling	Internal Tray	250 sheets max. ³
	Bypass Tray	1-sheet – Letter, Legal, Legal 13, Executive, A4, A5, A6, B5 and B6; Monarch, Com-9, Com-10, C5, C6 and DL envelopes
	Automatic Document Feeder (ADF)	MB280/290 – 50-sheet, standard
	Printer Paper Sizes	Letter, Legal, Legal 13, A4, A5, A6, B5, B6, Executive and Statement
	Paper Weight	Main tray – 16 lb. to 28 lb. bond (60–105 gsm); Manual feed – 16 lb. bond to 90 lb. index (52–162 gsm); ADF – 16 lb. to 24 lb. bond (60–90 gsm)
	Duplex	Manual copy mode
	Paper Output	50 sheets face down
Security	Access Control	Password protection for access, keyboard lock, Host USB lock
Environmental	Size (WxDxH)	MB260 – 17.6" x 15.2" x 13.5" (44.7 cm x 38.6 cm x 34.3 cm); MB280/290 – 17.6" x 15.2" x 16.2" (44.7 cm x 38.6 cm x 41.2 cm)
	Weight	MB260 – 25.6 lb. (11.6 kg); MB280/290 – 28.7 lb. (13.0 kg)
	Power Consumption	Power Save – MB260 10W, MB280 12W, MB290 13W; Idle – MB260 13W, MB280 16W, MB290 17W; Operating – All 340W
	Acoustic Noise	Operating (Printing/ Scanning/Copying) <53 dB(A); Standby <30 dB(A)
Warranty	System	1-Year Overnight Exchange ⁴

Ordering Information

Description	Part Numbers	
MB260 MFP (120V)	62431701	
MB280 MFP (120V)	62431801	
MB290 MFP (120V)	62431901	
Options		
External Wireless LAN Kit	70052302	
Supplies		
Toner Cartridge	3,000 pg. ⁵	56123401
Toner Cartridge	5,500 pg. ⁵	56123402
OKIcare® Overnight Exchange Warranties⁴		
	U.S.	Canada
MB200 MFP Series 2-Year Warranty	38010302	38010312
MB200 MFP Series 3-Year Warranty	38010303	38010313
OKIcare On-Site Warranties⁴		
	U.S.	Canada
MB200 MFP Series Upgrade to On-Site Warranty	38010401	38010411
MB200 MFP Series 2-Year On-Site Warranty	38010402	38010412
MB200 MFP Series 3-Year On-Site Warranty	38010403	38010413

¹ Published performance results based on laboratory testing. Individual results may vary.

² Based on ITU-T Test Chart #1.

³ Based on 16 lb. bond.

⁴ Available in the U.S. and Canada only.

⁵ Estimated life, based on ISO 19752. Unit ships with 2,000-page "starter" toner cartridge.

For more information on MB200 MFP Series Multifunction Products and supplies—including OKIcare warranty extensions—please call us at **1.800.OKI.DATA (800.654.3282)**⁴ or visit our website: www.okiprintingsolutions.com/us

Specifications are subject to change without notice.

Featured products may not be available in all countries.

Please contact your local office for regional availability.

© 2009 Oki Data Americas, Inc. OKI Reg. T.M., M.D., Oki Electric Industry Co., Ltd. Windows, Vista, Reg. T.M., Microsoft Corp. Mac Reg. T.M., Apple, Inc. Nuance, PaperPort Reg. T.M., Nuance Communications, Inc. PCL Reg. T.M., Hewlett Packard Co. PostScript Reg. T.M., PostScript 3 T.M., Adobe Systems, Inc. XMediusFax Reg. T.M., Sagem-Interstar, Inc.



OKI DATA AMERICAS, INC.

USA
2000 BISHOPS GATE BLVD.
MOUNT LAUREL, NJ 08054-4620
TEL: 800.OKI.DATA (800.654.3282)
FAX: 856.222.5320

CANADA
2735 MATHESON BLVD. EAST
MISSISSAUGA, ONTARIO L4W 4M8
TEL: 905.238.4250
FAX: 905.238.4421

LATIN AMÉRICA
2000 BISHOPS GATE BLVD.
MOUNT LAUREL, NJ 08054-4620
TEL: 856.231.0002
FAX: 856.222.5071

OKI DATA DE MÉXICO, S.A. DE C.V.
MARIANO ESCOBEDO, 748 8º PISO
COL. NUEVA ANZURES C.P. 11590
MÉXICO, D.F.
TEL: 55.5263.8780
FAX: 55.5250.3501

OKI DATA DO BRASIL INFORMÁTICA LTDA.
AV. ALFREDO EGÍDIO DE SOUZA ARANHA, 100
BLOCO C – 4º ANDAR
04726-170 – SÃO PAULO – SP – BRASIL
TEL: 11.3444.3500
FAX: 11.3444.3502

WWW.OKIPRINTINGSOLUTIONS.COM